

Open Source AI Conference 2025

Andy Fitze
7th May 2025

AI IST KEIN TRAUM, ES IST EINE ENTSCHEIDUNG!



82%

**How many
employees believe
that AI can support
their career?**



POTENTIAL

The World is changing

Data Growth

The world
generates
2.5 exabytes
per day

Computing Power

**10 billion
petaflops**

Complexity of models

**170 trillion
parameter**

Connected Devices

15 billions
100 billions by 2023

STANFORD UNIVERSITY



AI INDEX REPORT 2025

Performance & Real-World Integration of AI

Major Benchmark Gains (2023 → 2024)

MMMU: +18.8 pts, GPQA: +48.9 pts, SWE-bench: +67.3 pts

In some coding tasks, AI agents outperform humans under time pressure

AI Goes Mainstream

223 FDA-approved AI medical devices (vs. just 6 in 2015)

Waymo provides 150,000 autonomous rides/week in the U.S.

Baidu's Apollo Go robotaxis operate in multiple Chinese cities

Business Momentum & Productivity Gains

U.S. private AI investment: \$109.1B (12x China, 24x UK)

78% of organizations used AI in 2024 (up from 55% in 2023)

Generative AI funding: \$33.9B (+18.7% YoY)

Global Race & Rising Efficiency

U.S. Leads Model Output—China Closes the Gap

2024: U.S. (40 notable models), China (15), Europe (3)

Benchmark gaps (e.g., MMLU, HumanEval) nearly closed in 1 year

China leads in publications and patents

AI Becomes Cheaper & Greener

Inference cost (GPT-3.5-level): ↓280x (Nov 2022–Oct 2024)

Hardware costs: ↓30% annually, Energy efficiency: ↑40%/year

Open-weight models close performance gap to 1.7%

Regulation, Responsibility & Public Sentiment

Responsible AI Still Lags Behind

AI incidents rising, but RAI evaluations still rare
New safety benchmarks: HELM, AIR-Bench, FACTS
Governments more active: OECD, EU, UN, AU frameworks

Global AI Optimism is Divided

High optimism: China (83%), Indonesia (80%), Thailand (77%)
Lower: Canada (40%), U.S. (39%), Netherlands (36%)
Positive shift in Germany, France, Canada, UK, U.S. since 2022

Regulation & Public Funding Surge

59 U.S. federal AI regulations in 2024 (2x more than 2023)
Big investments: China (\$47.5B), France (€109B), Saudi Arabia (\$100B)

Education, Science & the Frontier of AI

CS Education Expands—But Gaps Persist

2/3 of countries now offer K–12 CS education (2x since 2019)

Africa & Latin America show fastest growth

U.S.: 22% rise in CS degrees over 10 years, but many teachers feel unprepared for AI

AI's Scientific Recognition

Nobel Prizes for deep learning & protein folding work

Turing Award: Reinforcement learning breakthroughs

Bottlenecks at the Frontier

90% of top models come from industry (vs. 60% in 2023)

Training compute doubles every 5 month

Top model skill gap is narrowing: #1 vs. #10 fell from 11.9% → 5.4%

AI AGENT



“LICENCE TO AUTOMATE”



AI AGENDA 2030

- **AI agent**
- **The reality behind AI Wild West**
- **Massive investments in LLM infrastructure**
- **War of the chips**
- **What comes after LLM**

- 
- 1. Radical Personalized AI**
 - 2. Intelligent Agents**
 - 3. Decentralized, Opensource LLM infrastructures**
 - 4. Ecosystem of Intelligence**

AI ETHIC

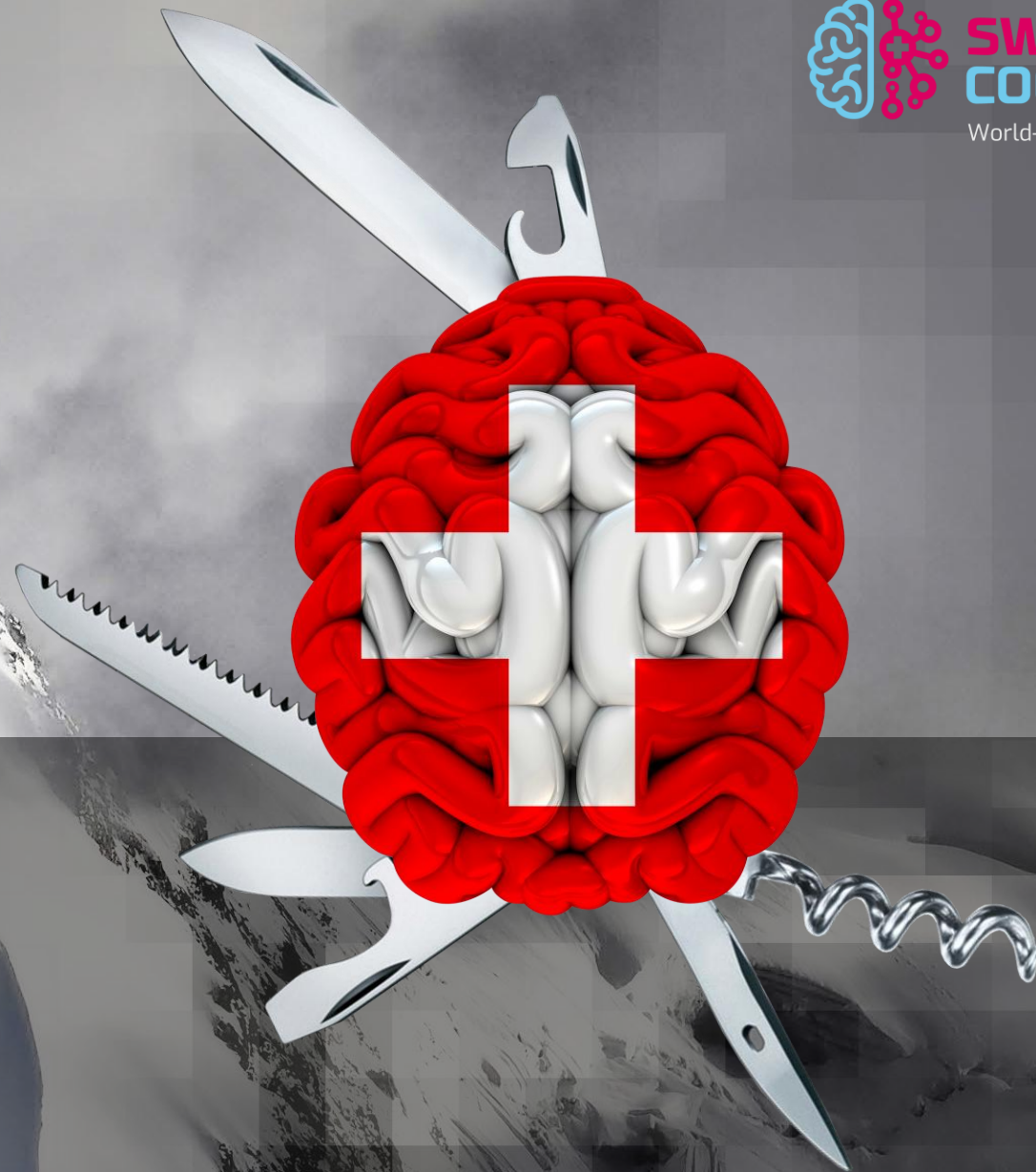


Performance vs. Competence



**Shift from technology-literate people
to people-literate technology**

SCHWAlz



«Ever since the 19th century, our country's prosperity has been based on synapses & technologies»

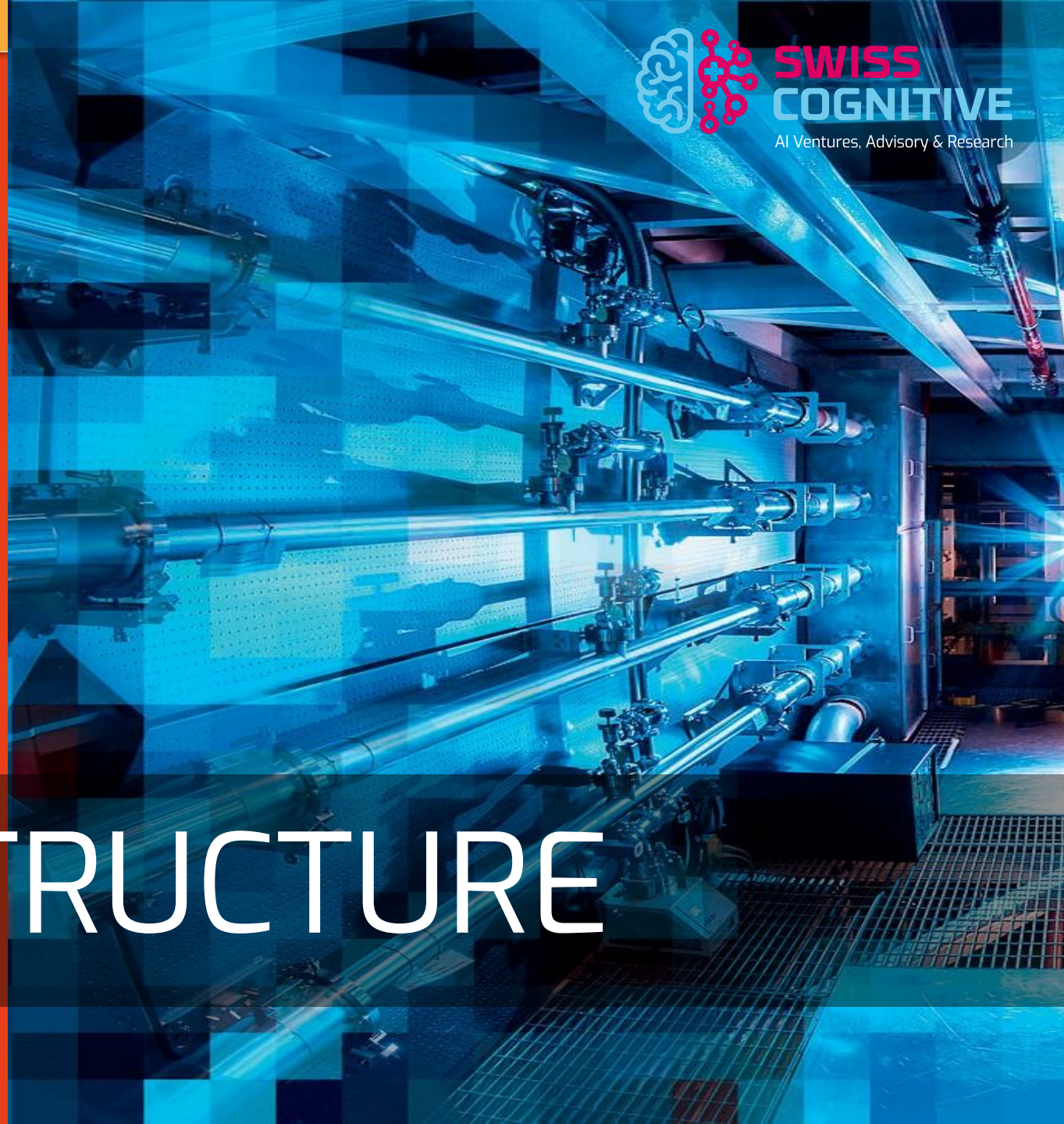
AI - NEW FOOD FOR THOUGHT



«Robust infrastructure
drives strong economic
performance»

Global Competitiveness Ranking
2024

BEST INFRASTRUCTURE



For 14 consecutive years, Switzerland has consistently ranked as the world's most innovative economy. 2024

Global Innovation Index by the World Intellectual Property Organization

BEST INNOVATION



AI BUSINESS



The background is a vibrant, futuristic digital landscape. It features four vertical panels, each with a distinct color and theme: blue on the left, orange in the center, dark blue on the right, and purple on the far right. The blue panel contains a large, glowing brain made of interconnected nodes, a bar chart, and a gear icon. The orange panel shows a man and a woman in business suits walking away from the viewer down a path, with a gear icon and a warning sign above them. The dark blue panel is filled with various icons including a globe, a butterfly, and a warning sign. The purple panel displays a complex network diagram with a person icon at the top. The floor is a glowing circuit board, and the sky is a gradient of blue and orange.



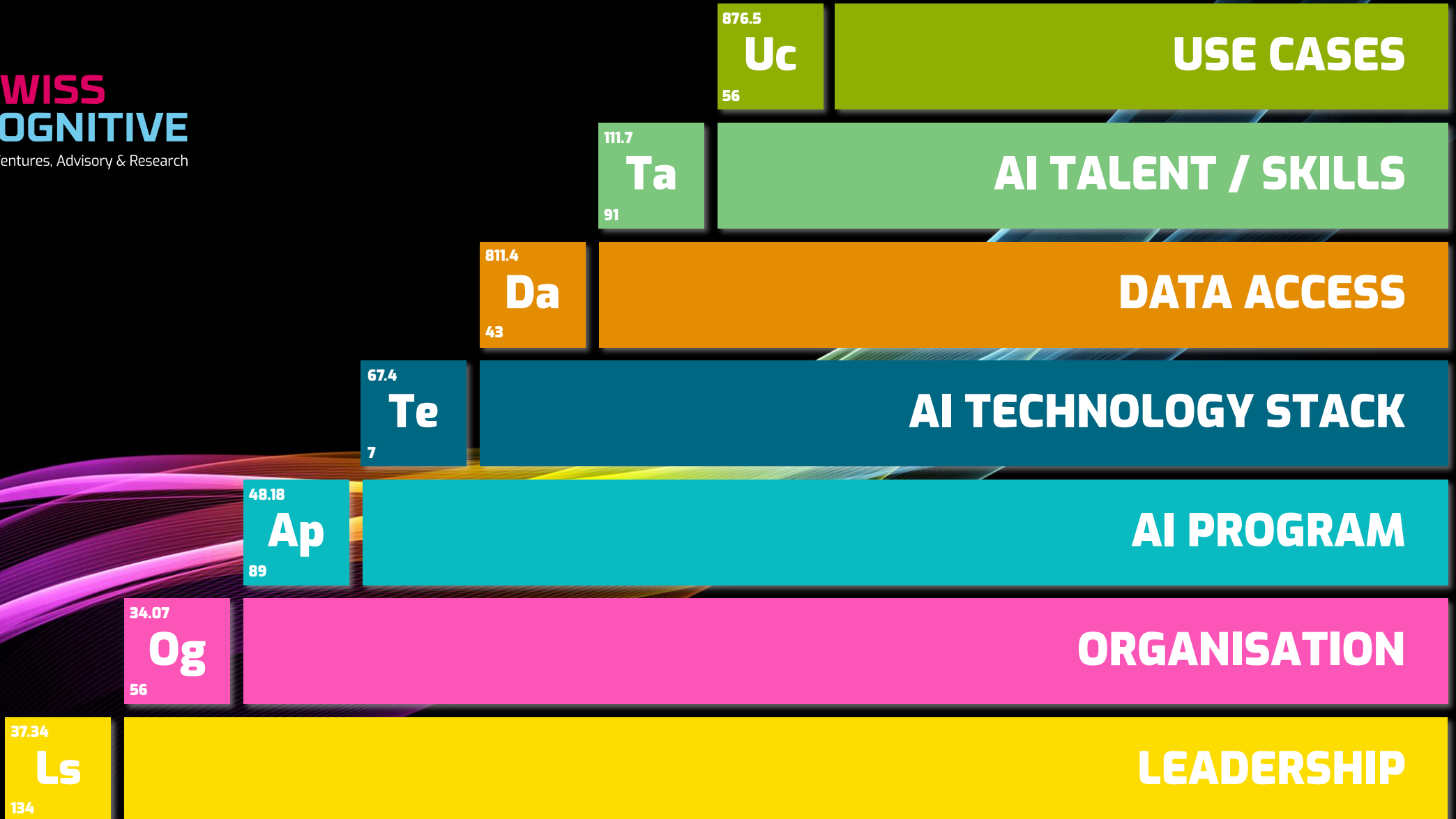
**Scaling to new
heights of AI
competitiveness**

THE AI PERIODIC TABLE



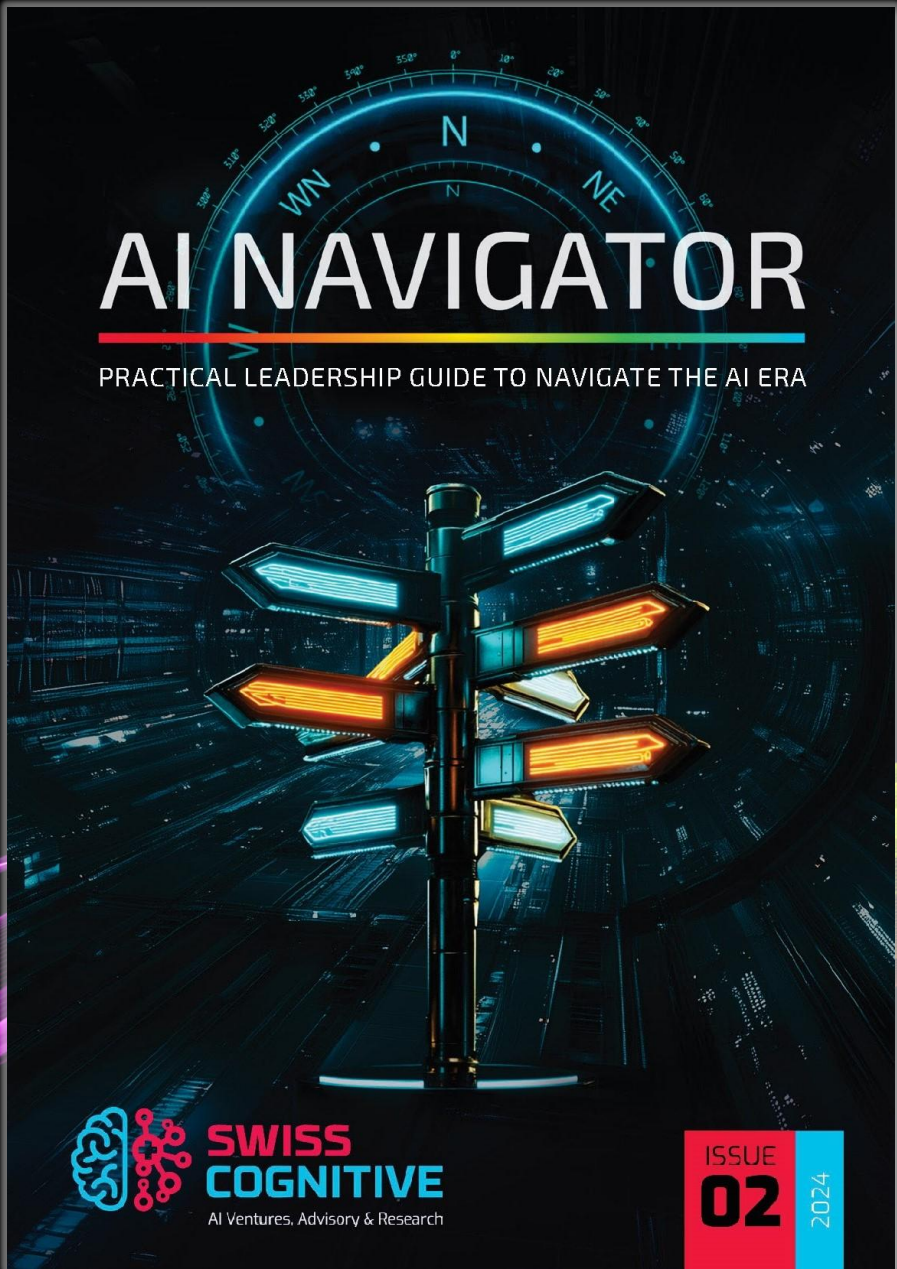
**SWISS
COGNITIVE**

AI Ventures, Advisory & Research





We have a chair for AI at all meetings



The AI Power Couple - With a Passion to Share



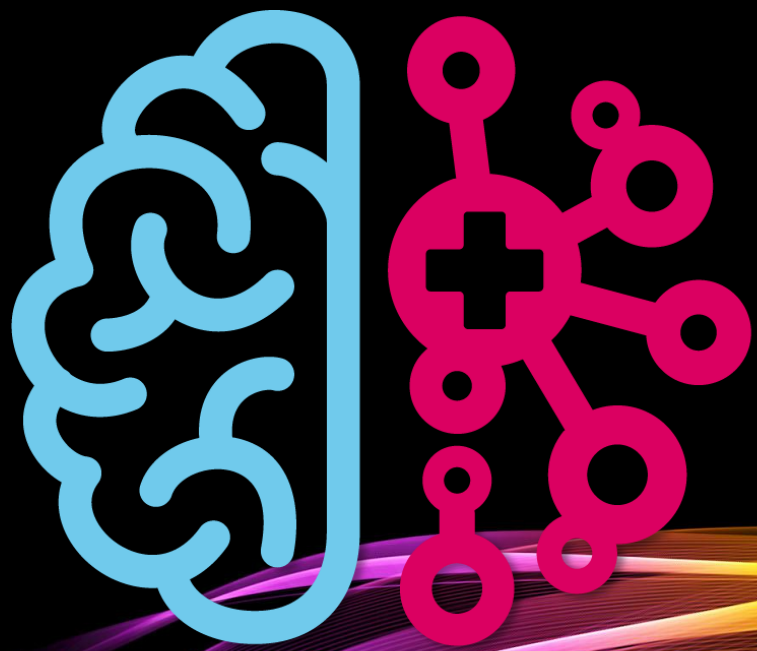
Andy Fitze
afitze@swisscognitive.com

Dalith Steiger
dsteiger@swisscognitive.com



WHY WAIT?

ACT NOW!



SWISS COGNITIVE

AI Ventures, Advisory & Research